



# Forecastle Report

Newsletter of the Midwest Model Shipwrights ♦ www.midwestmodelshipwrights.com ♦ February 2017

## ● Scuttlebutt ●

**COMMODORE, Bob Filipowski**, opened the January 2017 meeting at 7:30 with a great crew of 28 on board.

Bob introduced two guests, **Elijah Jennison** NRMSS/ NRG and his grandfather. We were happy to have this youthful and energetic modeler with us and hope to see him again soon.

A current member list was circulated for those present to make any needed changes and will be sent to all members as soon as the list has been updated. In addition, a list of the currently available Tri-Club videos was sent around in case anyone wanted to place an order for one of the topics.

**Kurt Van Dahm** advised us that he would no longer make printouts of other club's newsletters for circulation at meetings due to the high cost of printing. Selected articles will be made available, when content is of interest.

We were also reminded of the 2017 Manitowoc contest being planned for the third weekend in May and that, when the time comes, entry fees will need to be sent to **Wendy Lutzke** and not to the museum.

Planning is on schedule for the 2017 NRG Conference to be held in St. Petersburg, FL, 26-29 October.



Our group's get well wishes were sent out to our mate, **Tim Riggs**, who is recovering from a recent illness. We all look forward to hearing of your full recovery, mate.

**PURSER Allen Siegel** reminds us that dues for 2017 are now payable. If you haven't already done so, please send your check for **\$20**, made out to *Midwest Model Shipwrights*, to: **Allen Siegel, 843 Bryant Ave, Winnetka, IL 60093** or bring check or cash to the February meeting. Members who are delinquent at the end of February will not receive their March *Forecastle* newsletter. Thanks for your action, mates.



### 2017 OFFICERS & STAFF

President (Commodore)	- Bob Filipowski.....(847) 394-0757
Vice Pres (Flag Captain)	- Glenn Estry .....(847) 259-1574
Treasurer (Ship's Purser)	- Allen Siegel .....(847) 446-7248
Secretary ( Ship's Clerk)	- Bob Sykes.....(630) 766-6645
Newsletter Editor	- John Mitchell .....(847) 392-2259
Photographer	- Leon Sirota .....(847) 541-6285
Web Master	- John Pocius.....(630) 957-7298
	jpdesign@mindspring.com

## February Meeting Notice

### Building a Longboat Windlass

By Bob Filipowski

Bob is going to walk us through the process he used to research this subject. We will also learn how he overcame difficulties unique to this style windlass, and how he adapted modeling power tools to construct this longboat fitting.

Our next meeting will be at 7:15 p.m.  
Wednesday, February 15, 2017

At: **The South Church**  
501 S. Emerson Street  
Mount Prospect, IL

## ● Façades ●

By Rick Szydelko

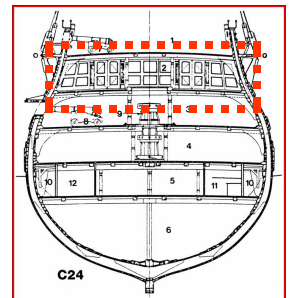
We all came away from Rick's session with one thought; Rick really knows his stuff when it comes to getting the most out of his computer to create modeling tools.

How to build authentic, to scale cabin walls from base drawings was the goal. Rick showed us how to select the most useful drawing views, how to computerize them by scanning, how to reproduce them to desired scale using a PC and printer and how to build the final product using the scaled drawing as a template.

Sounds easy? Well....yes and no. Yes, if you have a PC, scanner, printer and some basic skills. No, if you are computer illiterate. If no, take heart, you may be able to get some help from one of your techie mates.

Rick started with this drawing of a bulkhead view on his model of the HMS *Victory*. His goal was to reproduce the panel having mul-lioned windows and decorative trim as outlined here in red.

His first task was to scan this drawing and create a digital image that he could then resize to proper scale and print out on paper.

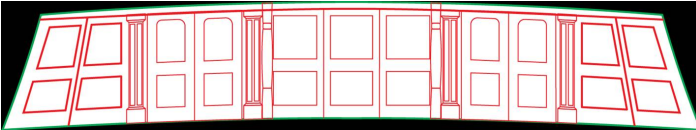


"Façades", continued on Page 2

## The Forecastle Report, Feb. 2017 - P.2

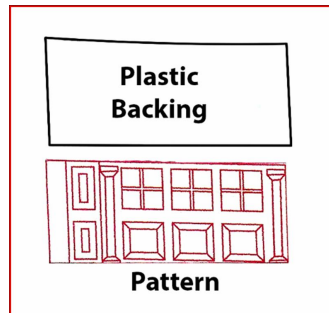
*"Façades", continued from Page 1*

The image below is the final printout of the scanned plan drawing. Rick has defined the line detail in red creating what he referred to as a "vector" image\*. While this technique was definitely beyond the average modeler with minimal PC skills, simple scanner reproductions of a plan



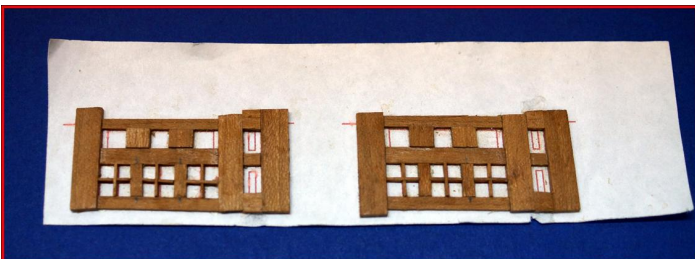
drawing would be possible and may be usable, as well.

The drawing was cut out and pasted to a sheet of thin backing and used as a test pattern to check for fit on the model. Rescaling of the drawing would be done and a new template created, in case the original did not fit the target space.



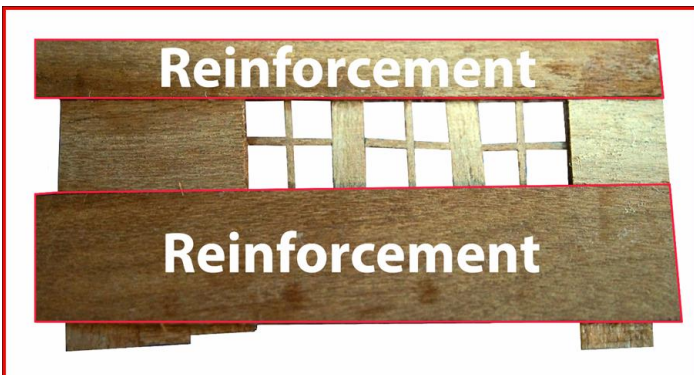
Once the pattern matched the target space, a working copy of the drawing was created and used as a template for construction of the final part.

Wood strips were cut and glued directly to the template

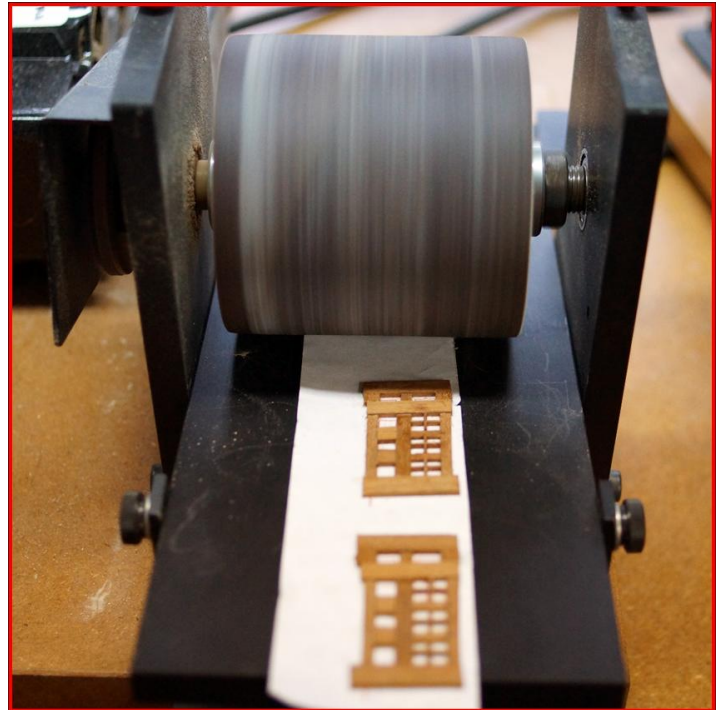


with white glue using the drawing outlines as guides. Window mullions were installed by first cutting a small slit in the sides of the frames and then gluing the mullions into those slits.

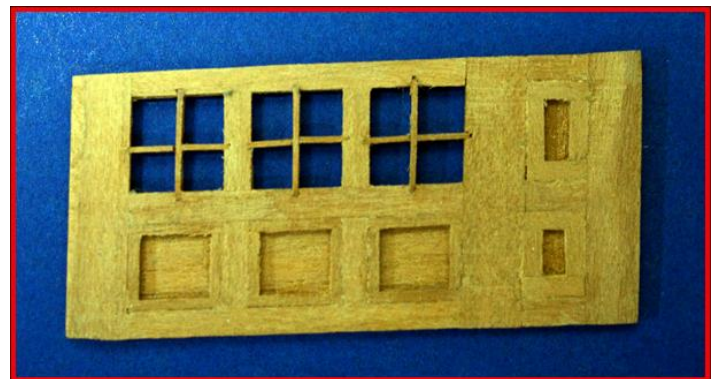
The final operation was to glue reinforcement strips to the



back side of the part to add strength and tie everything together firmly. The reinforcement also bordered the top and bottom of the mullions to help lock them into place.



The surface glued to the template will ultimately be the outside after the paper is finally sanded away. Rick used a drum sander to do this, as he could achieve an absolutely flat surface with this tool without affecting the thickness of the part. Creating multiple parts on one template sheet also made it easier to handle the sanding operation in the drum sander.



The final operation was to add detail to the front of the part, i.e. trim highlights, etc., fine sanding and then staining or painting the part.

We hope Rick's presentation will give you all the courage to give this technique a try. It can be as simple or involved as you feel capable of tackling and the results will be way ahead of anything you could do on vs. off the model.

Our thanks to Rick for a very informative and enjoyable evening.

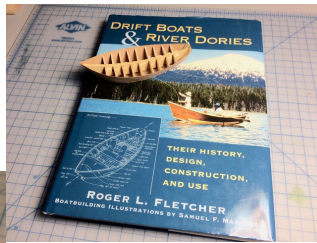
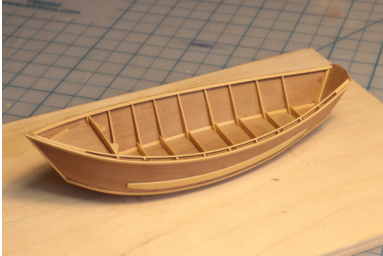
*\*The software referred to by Rick was "Adobe Illustrator", which allows you to take the scanned "raster" image and create from it a "vector" image that can be more accurately resized without creating image degradations.*



## ● Ships on Deck ●

**John Pocius** has started another of his wonderful models of a (1:32) *McKenzie River Drift Boat*, this one the #2.

John got his inspiration from



the book *Drift Boats & River Dories* by Roger Fletcher and will finish off his project as a diorama with an oil painting of Mt. Hood in the back-

ground, similar to the image on the book cover. As an added detail, the boat will be fitted with an outboard motor. Boxwood and apple wood are the basic materials. We're really glad to hear from you again, mate, and see your fine work.

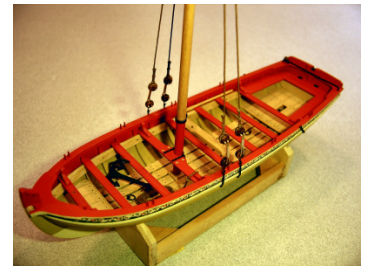
**Hal Chaffe** showed us a product that he found to help him create water surfaces on his dioramas. It is known as "Magic Water" and can be purchased at model railroad hobby shops. The product is a two-part mix and costs about \$30. The ad appears in "Model Railroader" and is also on the web at [www.unrealdetails.com](http://www.unrealdetails.com).



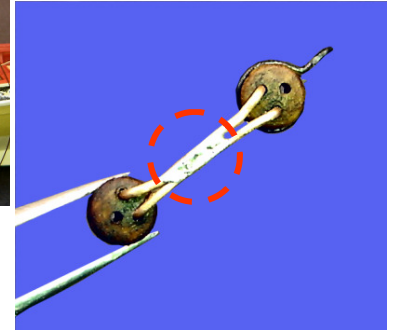
**Doc Williams** showed us photos of his reconstruction project on the *USS Constitution*, which has been finished and delivered to its owner, who we're sure was highly pleased. Beautiful job, as always, mate.



**Bob Filipowski** continues work on his *English Longboat* and is focusing in on the very fine details as only he can. Despite the model's small size, this project has provided plenty of chances to do research into



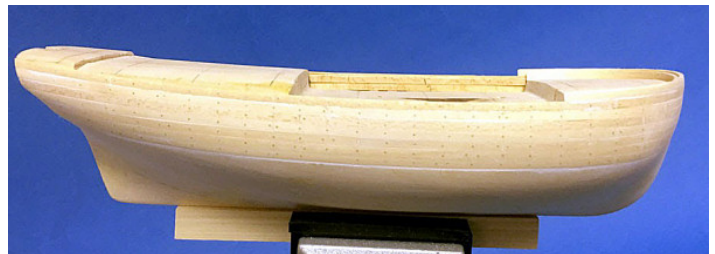
features that were not covered in the kit. Added to that, Bob also continues to refine



his building techniques and tools to meet his modeling demands.

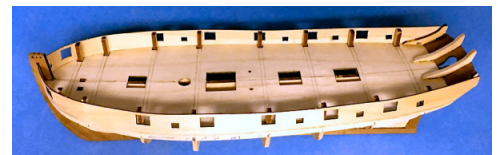
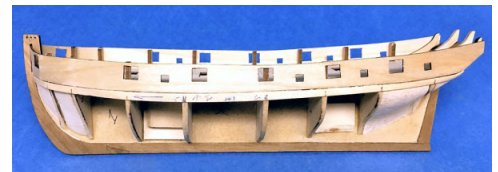
Case in point is the deadeye rigging jig he made by soldering two pieces of wire together in the middle and then bending them at both ends to form a spacing tool. What a great idea, mate!

**Patrick Sand** showed us his first solid hull model of the 1:64 schooner *Sultana* that he observes needs lots of sanding. Plank over solid hull work also included (many)



very finely done tree nails, which were expertly spaced. Question arose as to how to make them show up, if the hull is painted.

On the plank-on-frame model Patrick has in the works, the *HMS Lady Nelson*, he needs some advice on planking the hull and how to deal with rabbets at the bow and keel. Anyone with ideas, please let Patrick know in February.



Great looking start, mate.



## The Forecastle Report, Feb. 2017 - P.4

"Ships-on-Deck", continued from Page 3

**Fred Widmann** brought in his 1/8 scale model of a 1940 *Barrel Back Chris-Craft* speedboat, as much to show us his work on the case as the beautiful results he achieved on the boat.



The significant feature of his case is that he used glass rather than plastic, which he finds unacceptable. The hand made wood frame was expertly joined to give the whole piece a very finished look.

**Gus Agustin** displayed more in his collection of tiny books that hide very beautiful miniature model ships or ship's parts.



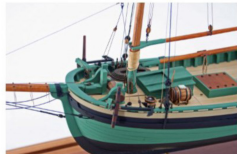
Really fascinating, mate. Your bookbinding matches your boat building perfectly. What a library!

### THE NAUTICAL RESEARCH GUILD "ADVANCING SHIP MODELING THROUGH RESEARCH"

Annual membership includes our world-renowned quarterly magazine, Nautical Research Journal, which features photographs and articles on ship model building, naval architecture, merchant and naval ship construction, maritime trade, nautical and maritime history, nautical archaeology and maritime art.

Other benefits include discounts on annual conferences, ship modeling seminars, NRG products and juried model competitions which are offered exclusively to Guild members. We hope you will consider joining our ongoing celebration of model ships and maritime history.

YEARLY  
MEMBERSHIP  
\$48.00 USA  
\$60.00 Foreign



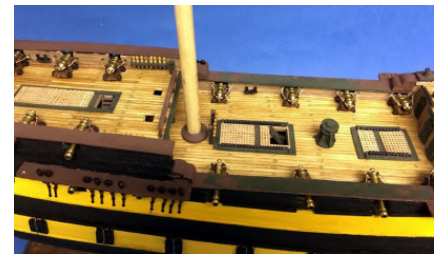
For more information contact us at: [www.thenrg.org](http://www.thenrg.org) or telephone 585-968-8111



**Bob Sykes** has been working diligently on his model of the HMS *Serapis* by "Aeropicolla". We finally found that he didn't buy the kit partially finished, as we reported last month, but started it from scratch. Bob says this kit has

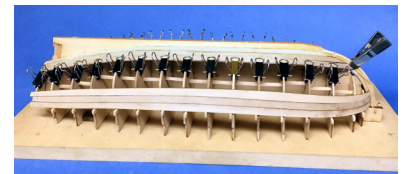


gone together very well, with parts mostly fitting properly. He ran into one problem when he tried to glue some parts to the hull *after* he had applied a coat of varnish. The glue didn't hold, so he had to go back and pin the parts to get them to stay in place. Thanks for the good advice, mate.



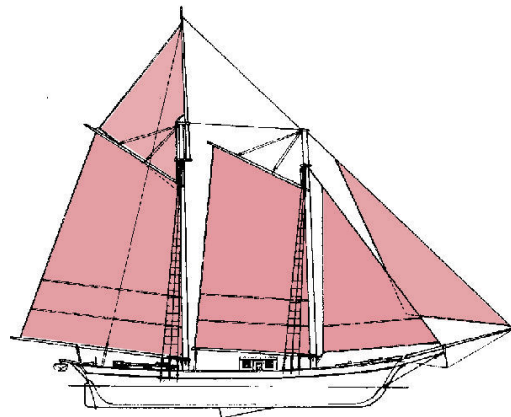
Bob's deck planking is really first rate and the finish he achieved was very pleasing.

**John Hirsch** is working on the 1:48 "Model Shipways" kit of the HMS *Bounty Launch* and has experienced some challenging moments trying to get the planks soaked and bent to fit. The kit's planks were so well pre-cut that, once bent to shape, they fit perfectly. Getting the planks to butt up tight was tackled with clamps when glued.



**Elijah Jennison**, our guest this evening, showed us the work he has done on his solid hull model of the 1:96 1868 *Phantom New York Pilot Boat* by "Model Shipways". Elijah credits Kurt for donating many parts and materials. We'd all say this is a really wonderful start to modeling for you and we know there will be many more to come.





# Forecastle Report

Newsletter of the Midwest Model Shipwrights  
[www.midwestmodelshipwrights.com](http://www.midwestmodelshipwrights.com)